

Burner maintenance

After 150 hours of burner operation, an alarm is activated informing about the necessity of device maintenance.

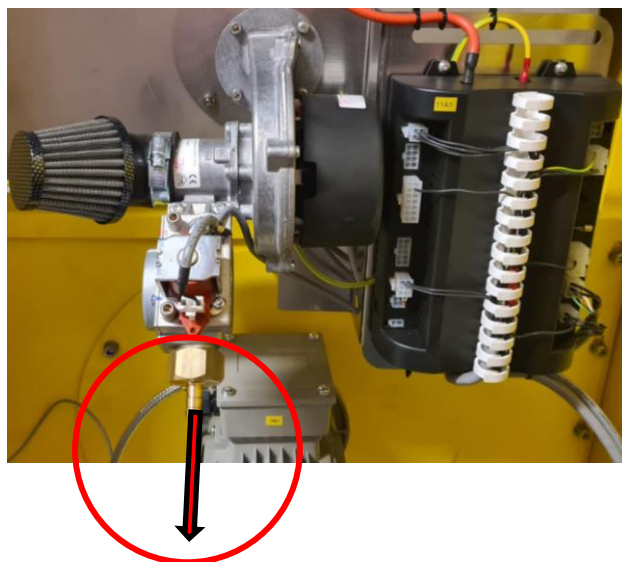
It is recommended to clean the gas burner after **2 or 3 maintenance alarms**. However, when there are problems with the burner power, flame and ignition control, or temperatures, it should be cleaned immediately. The cleaning process in the following steps is shown in the pictures below.

Necessary tools: flat head screwdriver and cross, 10 spanner, compressed air.

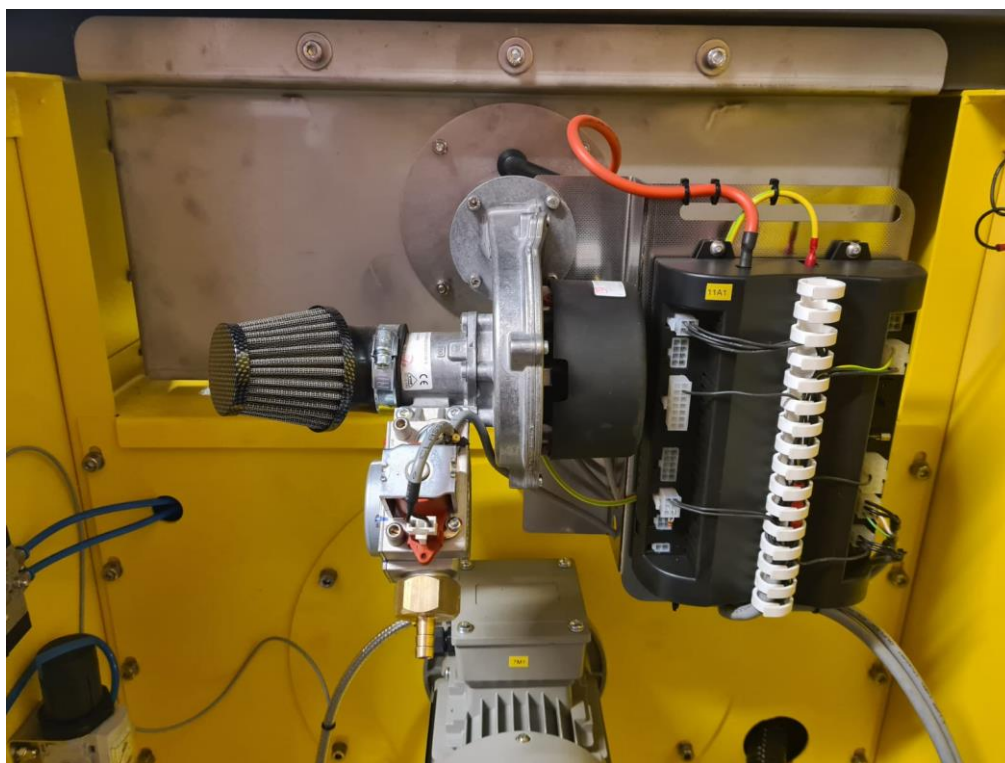
Step 1. Perform emergency stop> switch off the power of the device> disconnect the power from the mains!



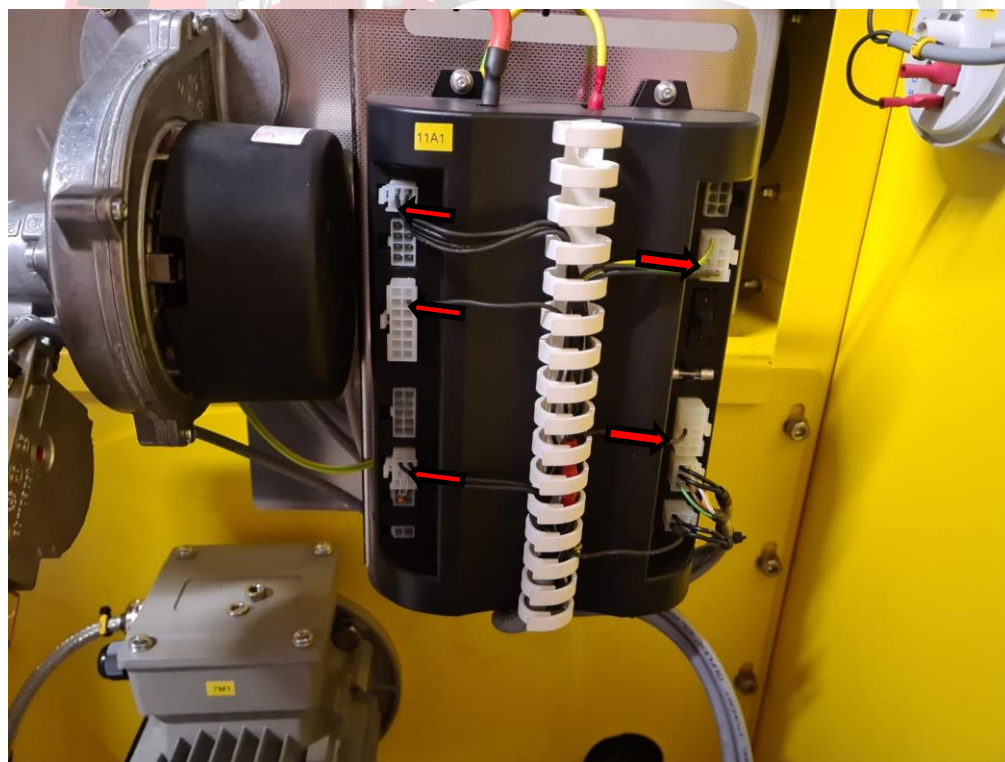
Step 2. Disconnect the gas supply to the device!



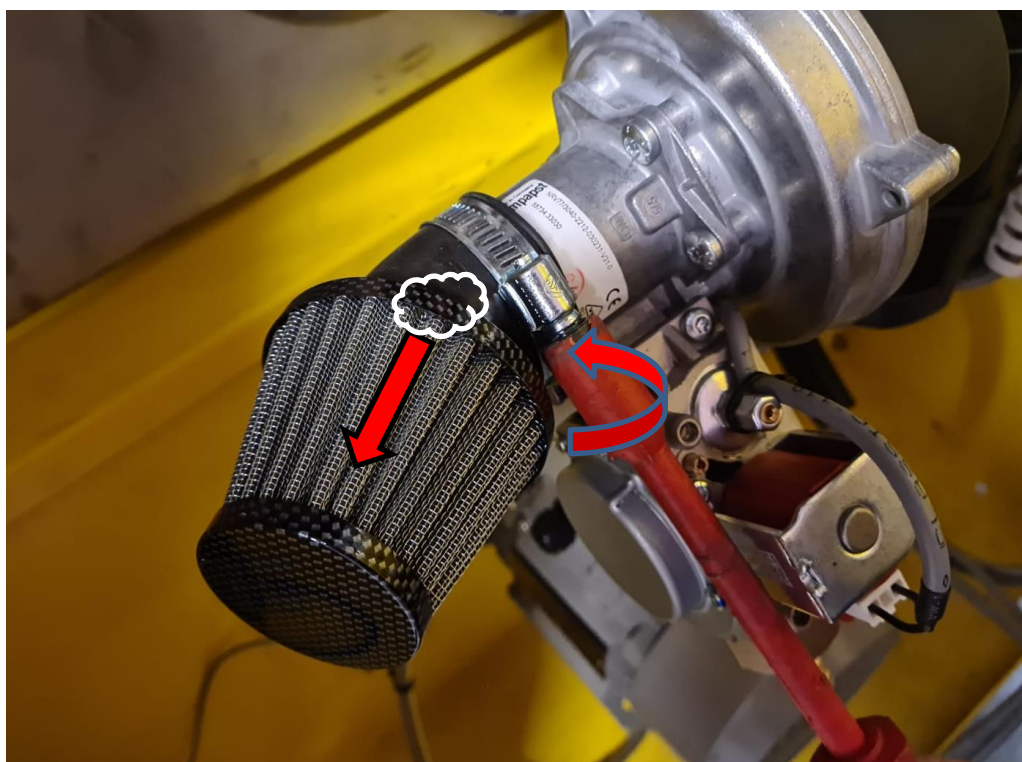
Step 3. Cleaning the burner



If it is necessary to send the burner to Coffed, disconnect and remove these cables - if there is no such need, leave the cables plugged in:

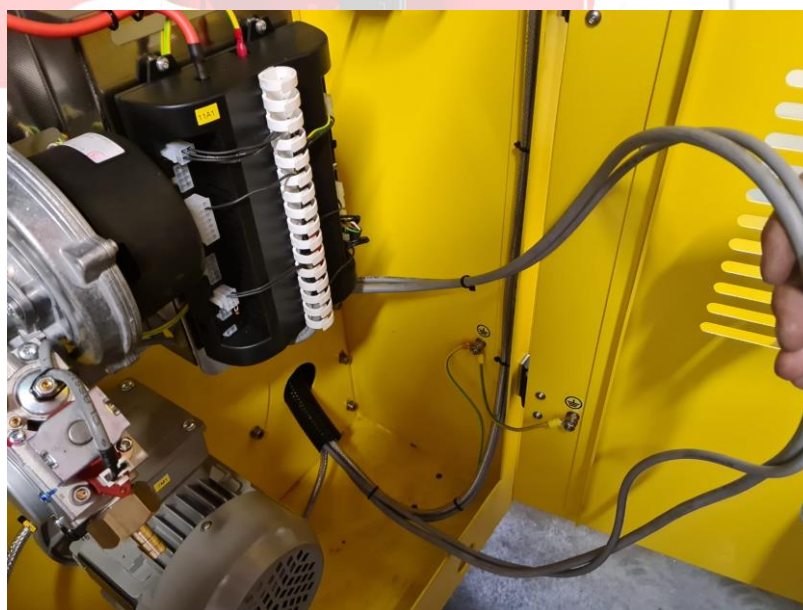


Step 4. Cleaning the air filter



Unscrew and remove air filter from whole burner, then use compressed air to clean the surfaces from the inside. After these steps, screw it back.

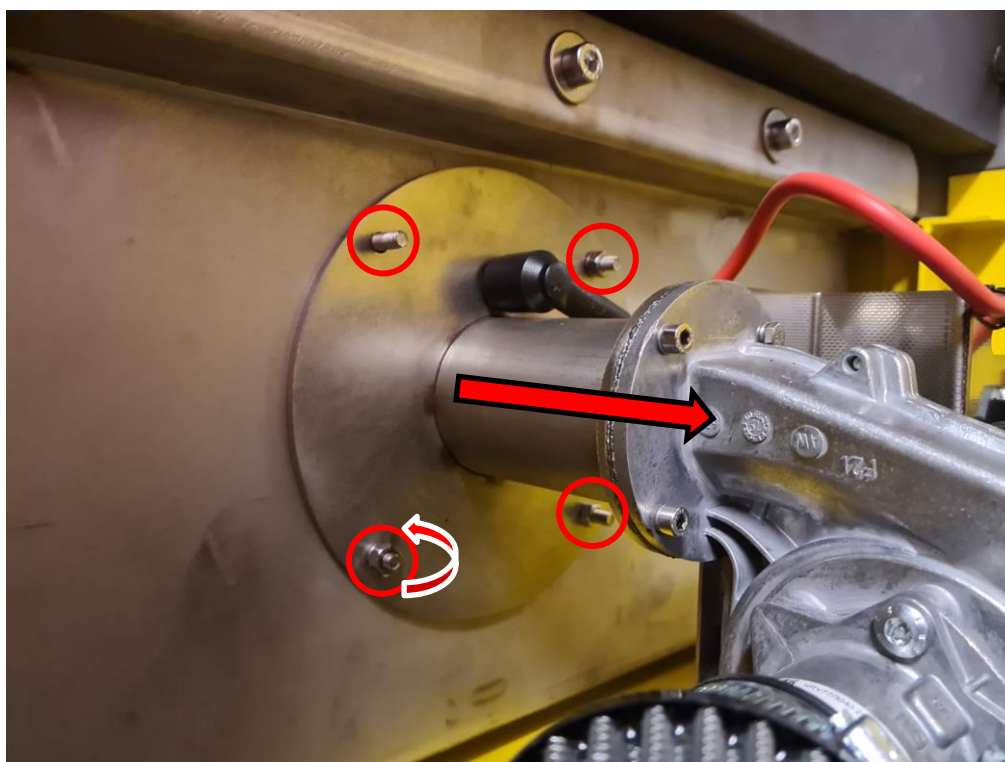
Step 5. If You want to unscrew and remove whole burner from the device follow these steps



Cut the zip ties and unwind the cable

Unscrew and remove the burner from the device

Pull the burner horizontally so as not to damage the burner candle



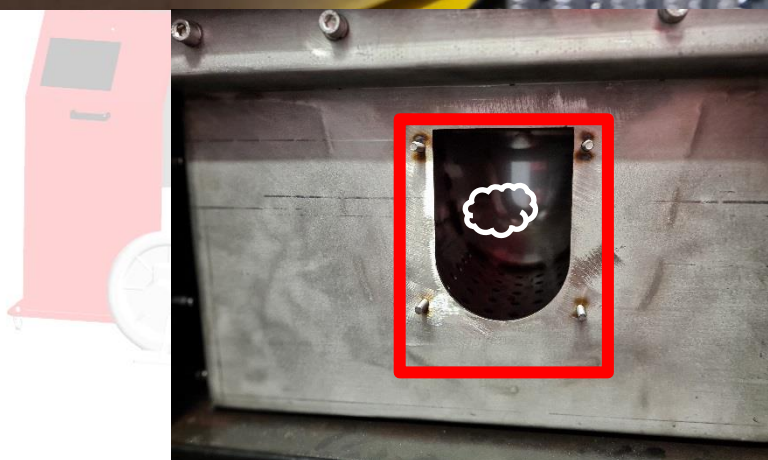
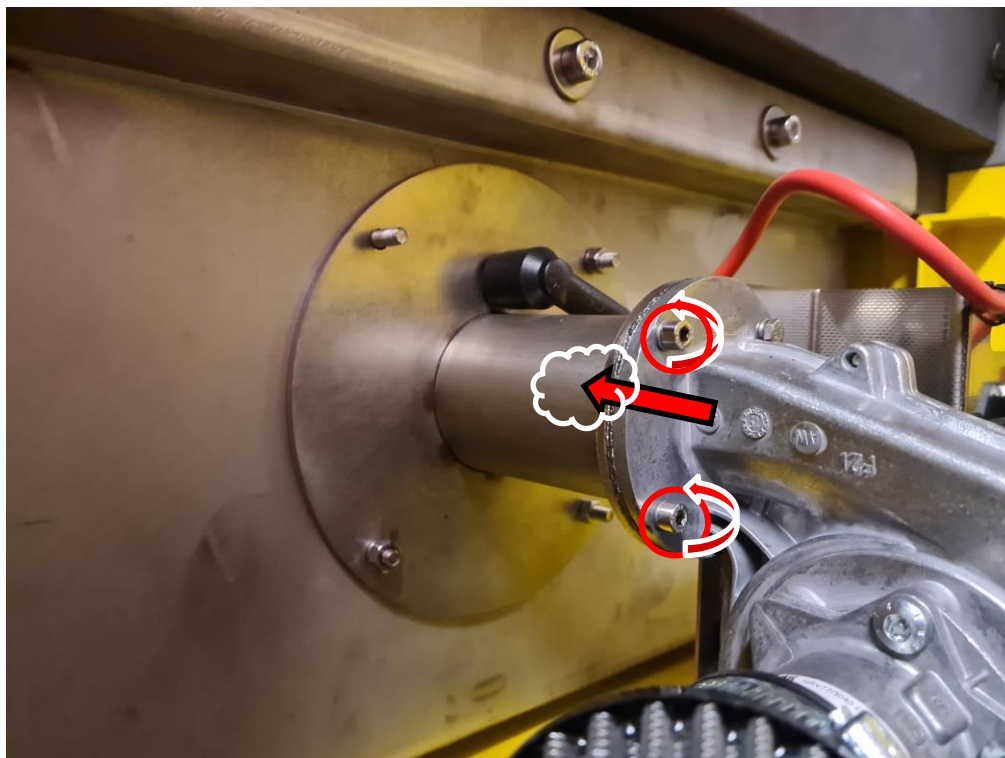
Step 6. Burner maintenance

Check the distance between the candle and the mesh - recommended is **4 mm**. Make corrections carefully, without using force.

Use compressed air to clean the surfaces shown in the illustrations below.



After unscrewing and removing the burner unscrew the 4 screws to blow the inside of the burner tube with air



After cleaning the burner and burner grille, assemble the components. After these activities, check the gas system for tightness and the correct operation of the flame and ignition control system!