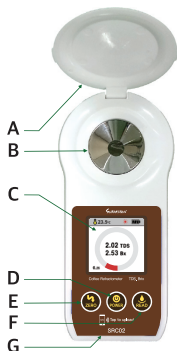


What's Inside

- A Refractometer (SRC02)
- B Pipettes
- C Instruction Manual

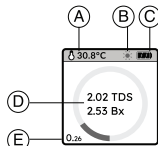
Device Overview

- A Cover lid
- B Stainless Steel Sample Well and Prism
- C Liquid Crystal Display (LCD)
- D ON/OFF button
- E ZERO button (Calibration)
- F READ button (Measurement)
- G NFC tag area

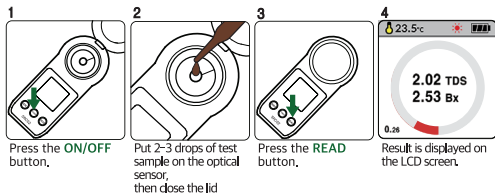


LCD display

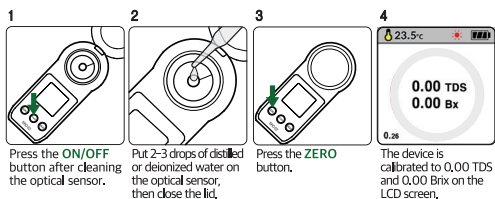
- A Temperature
- B Light sign (if light icon shown, make sure to close the cover before measuring)
- C Battery
- D TDS, Brix measurement %
- E Previous TDS measurement %



How to use



Calibration



Troubleshooting

If product doesn't turn on, verify the battery is not low.
 If result takes too long to load, clean the optical glass sensor, then put the sample material or try again after 10 seconds.
 If data is erratic:
 (1) calibrate when clean water is not measured as 0%,
 (2) measure again after closing the cover,
 (3) measure again after cleaning the optical glass sensor.

Caution

- Mix samples thoroughly for accurate measurement.
- Handle instrument with care. Do not drop.
- Do not use metallic or sharp tools that could scratch the prism.
- Do not put the device or pipet directly into the testing material. Place the testing material in a separate container such as a paper cup, then use a plastic pipet to transfer the solvent into the device sample well.
- Discard the sample that was used to test.
- Do not immerse the product under water.
- Keep the optical glass sensor clean by absorbing sample material with soft cloth and rinsing sample well with deionized or distilled water after each use. Do not use organic solvents (acetone, benzene, thinner for paints, gasoline, etc) to clean.
- Keep device out of reach of infants and children. Infants and children are not allowed to use the product.
- Keep battery separate when not using for a long time.
- Keep instrument in room temperature and at shaded place.
- Do not dismantle or attempt to fix the product.

a. Rule Part 15.19(a)(3): This device complies with part 15 of the FCC Rules. Operation is subject to the following two conditions: (1) This device may not cause harmful interference, and (2) this device must accept any interference received, including interference that may cause undesired operation.

b. Rule Part 15.21: The users manual or instruction manual for an intentional or unintentional radiator shall caution the user that changes or modifications not expressly approved by the party responsible for compliance could void the user's authority to operate the equipment. In cases where the manual is provided only in a form other than paper, such as on a computer disk or over the Internet, the information required by this section may be included in the manual in that alternative form, provided the user can reasonably be expected to have the capability to access information in that form.

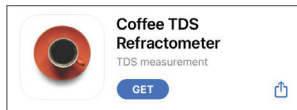
NOTE: This equipment has been tested and found to comply with the limits for a Class B digital device, pursuant to part 15 of the FCC Rules. These limits are designed to provide reasonable protection against harmful interference in a residential installation. This equipment generates, uses and can radiate radio frequency energy and, if not installed and used in accordance with the instructions, may cause harmful interference to radio communications. However, there is no guarantee that interference will not occur in a particular installation. If this equipment does cause harmful interference to radio or television reception, which can be determined by turning the equipment off and on, the user is encouraged to correct the interference.

Model Name	SRC02
Range	TDS: 0.00% to 27.00%
Resolution	TDS: 0.01% Brix: 0.01% Temp: 0.1 °C
Accuracy	TDS: ±0.2% Brix: ±0.2% Temp: ±1.0 °C
Temperature Compensation	10 °C to 60 °C (50 °F to 140 °F)
Measure Environment	10 °C to 40 °C (50 °F to 104 °F)
Size (W x D x H)	56 x 122 x 30 mm (2.2 x 4.8 x 1.1 in)
Power	1.5 V x 2 (AA Alkaline Batteries)
Unit	TDS: % Brix: % Temp: °C
Auto-Off	90 seconds
Weight	165g (including protection cover)

SURAKHAN[®] Mobile App Settings and Usage

1 Download the app

Search for **Surakhan Coffee Refractometer** in the App Store or Google Play



Or take a photo of the QR code below to go directly to app store page



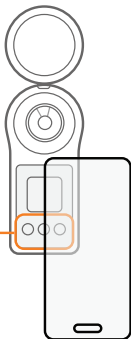
2 Transfer Data

After measuring the sample, turn on the app, then tap the mobile phone to the bottom of the refractometer for 1 to 2 seconds to read and transfer results on the phone. The value can still be accessed on the phone even when the refractometer is turned off.

NOTE: This app works on Android and iPhone 7 or newer with NFC function built in.

NOTE: NFC detection location might vary per mobile phone. Be sure to find the correct location.

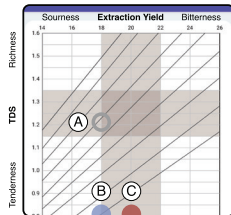
NOTE: The content in the app can be zoomed in and out.



NFC Location

App Features

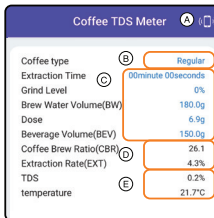
Brewing Chart



- A Desired TDS value set by user
- B Current sample value
- C Predicted value that changes based on user's input on Calculator page

The tinted area in the center represents ideal coffee taste and concentration. The vertical value represents TDS level and the horizontal value shows extraction yield. **NOTE:** In some cases, there could be no bitter taste even when the Extraction Yield is over 22%. **NOTE:** Please keep extraction time and grind fineness consistent to get accurate TDS value.

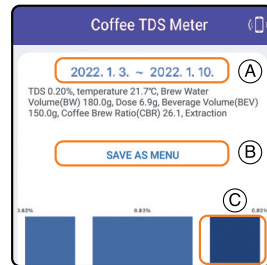
Calculator



- A NFC button
iOS phone: Press (NFC icon) and tap phone to refractometer to read
Android phone: Tap phone to refractometer read without pressing (NFC icon) button
- B Select Regular or Espresso Coffee
- C Fill in data to calculate
- D Automatically calculated value
- E Measured value

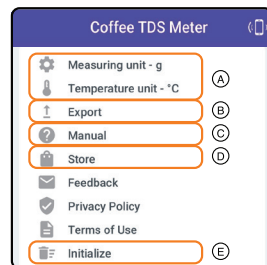
Coffee Brew ratio(CBR): The ratio of water and coffee beans used
Extraction Rate(EXT): Percentage (%) of grounds dissolved in water (It indicates the sourness and bitterness of the coffee.)
TDS: Percentage (%) of total dissolved solids in coffee (It indicates the richness and tenderness of the coffee.)

History



- A Set time period
- B Save as recipe
- C Select graph to view data

Settings



- A Set measurement unit
- B Share result via messenger apps, text, e-mail, etc.
- C View device manual
- D Visit Khaldar website
- E Reset all data

Product warranty

- Product : Surakhan coffee refractometer
- Model : SRCO2
- Serial no :
- MADE IN KOREA
- Manufacturer : SNIX Electronics Co., Ltd
- Seller: FKH Korea Co, Ltd (+82) 02-703-7710
- Guarantee period : 1 year from the date of purchase.
- Purchase date :
- Buyer :
- Place of sale :

When purchasing, you must record the contents in the product guarantee to receive A/S.