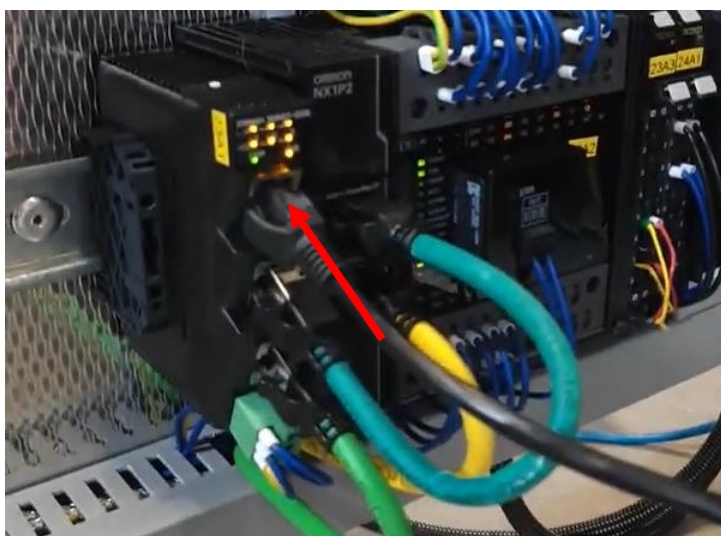
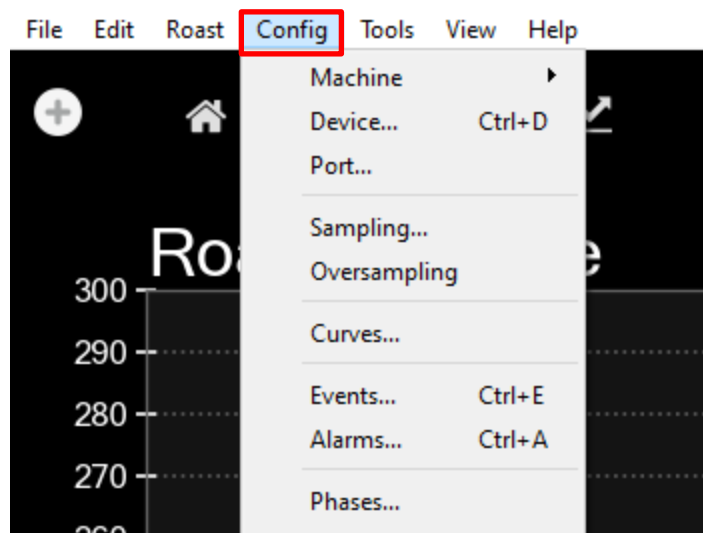


CONNECT COMPUTER WITH AUTOMATIC ROASTER

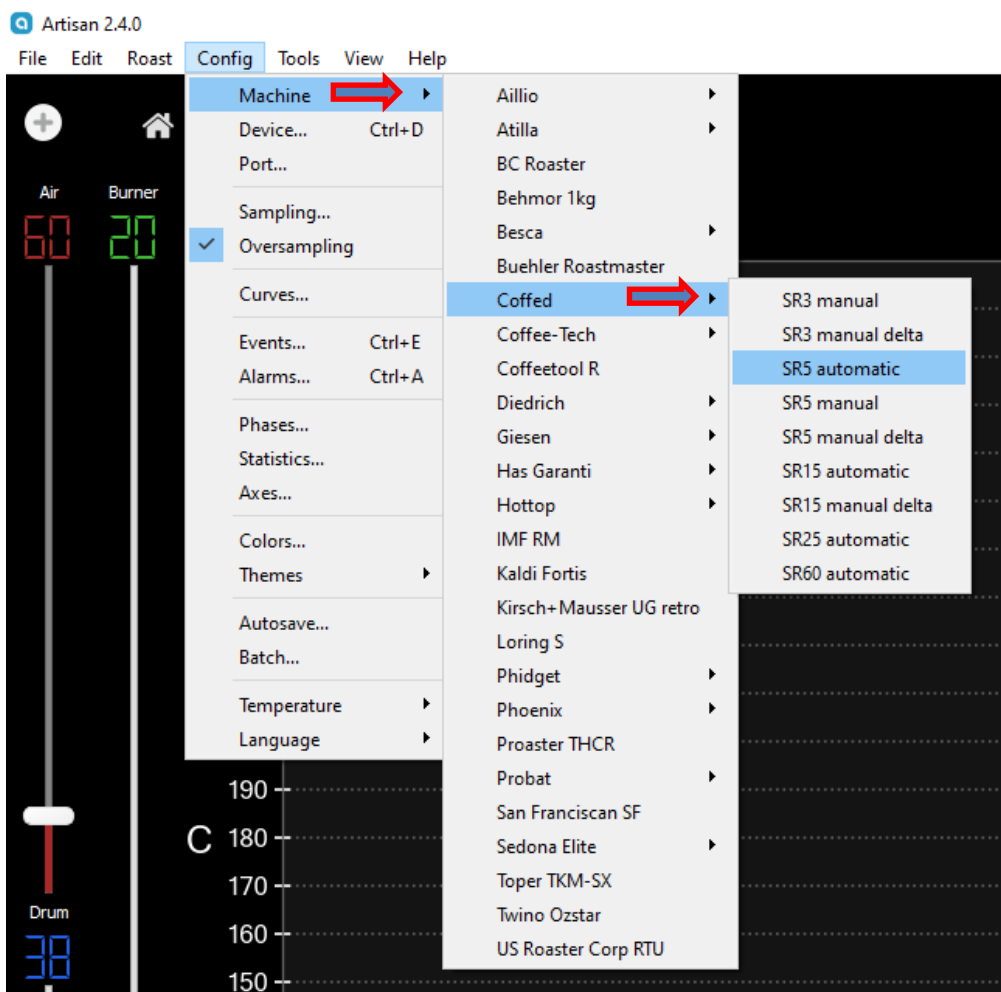
STEP 1: Use the cable to connect controller port in electrical cabinet to computer.



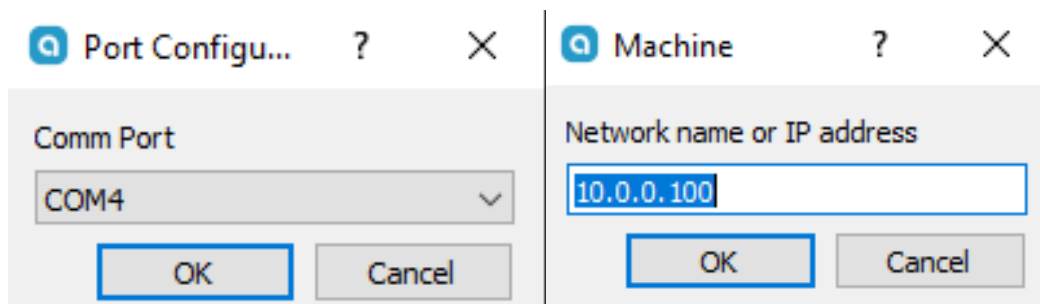
STEP 2: Open **updated** Artisan version and follow steps. It's free software to download from artisan scope website. **For example we used our SR5 automatic version.**



Machine > Coffed > SR5 automatic



STEP 3: After choose device two messages that you must accept will be displayed. Communicate COM4 showing You name of connect controller from electrical cabinet. IP address for Your display on computer is 10.0.0.100. For example display from machine have 10.0.0.101. and for SR60 is 10.0.0.200. Below two different setup (depending on the machine selected).

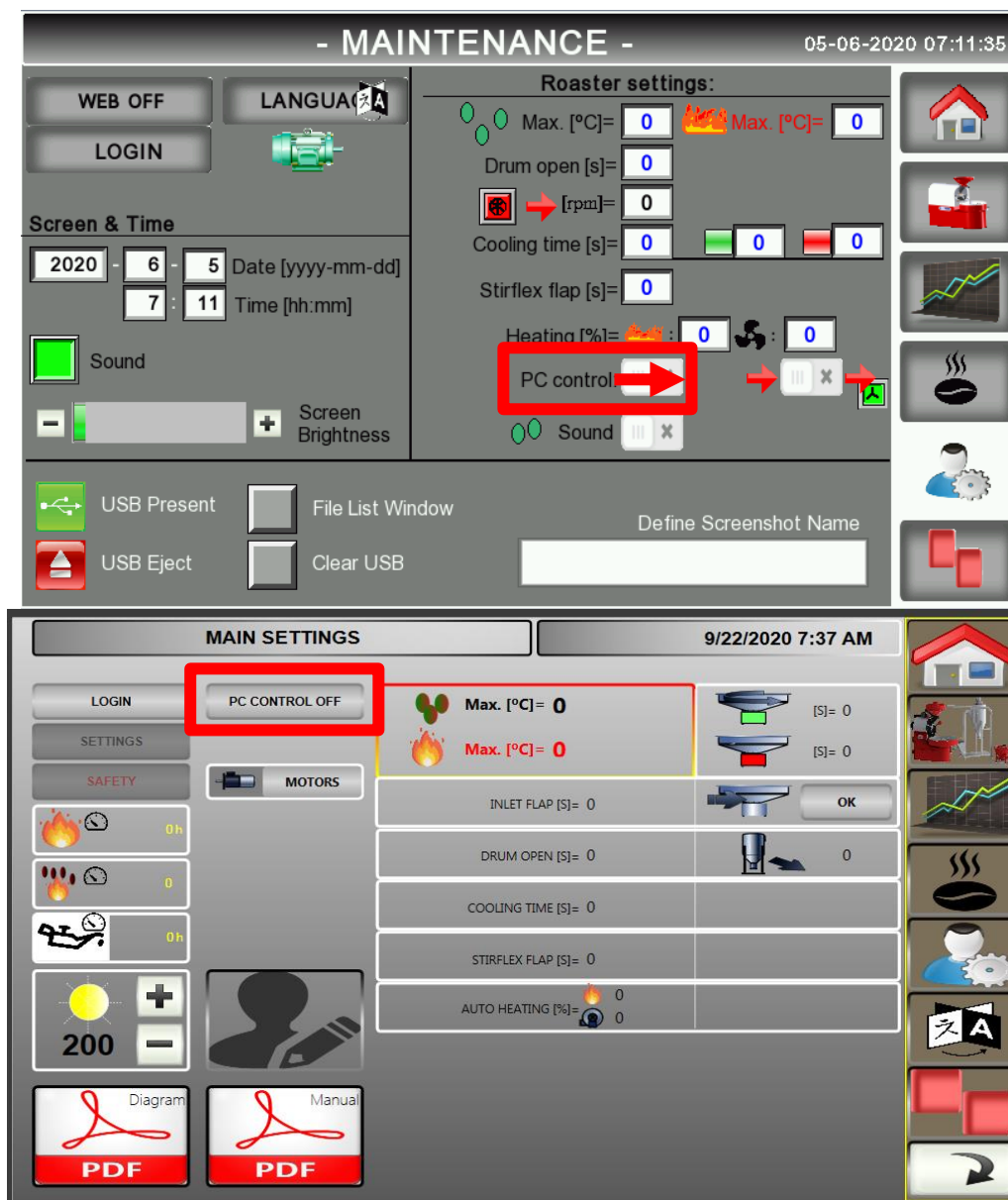


USB setup

Network setup

STEP 4: After these steps Artisan showing You temperatures on coffee roaster. But You cannot manipulate it on PC. If You want it follow the steps bellow.

STEP 5: On the display of coffee roaster in the service or settings window, **TURN ON** the PC control (as shown in the pictures).



If You decide to back to only control roaster from device display TURN OFF PC control.

STEP 6: IF THERE IS A PROBLEM WITH CONNECTION AND CONTROL, YOU MUST CHANGE THE SETTINGS OF THE NETWORK CARD. WE DO IT THIS WAY LIKE BELLOW:




a) After pressing the internet or wifi icon, select "open network and internet settings"

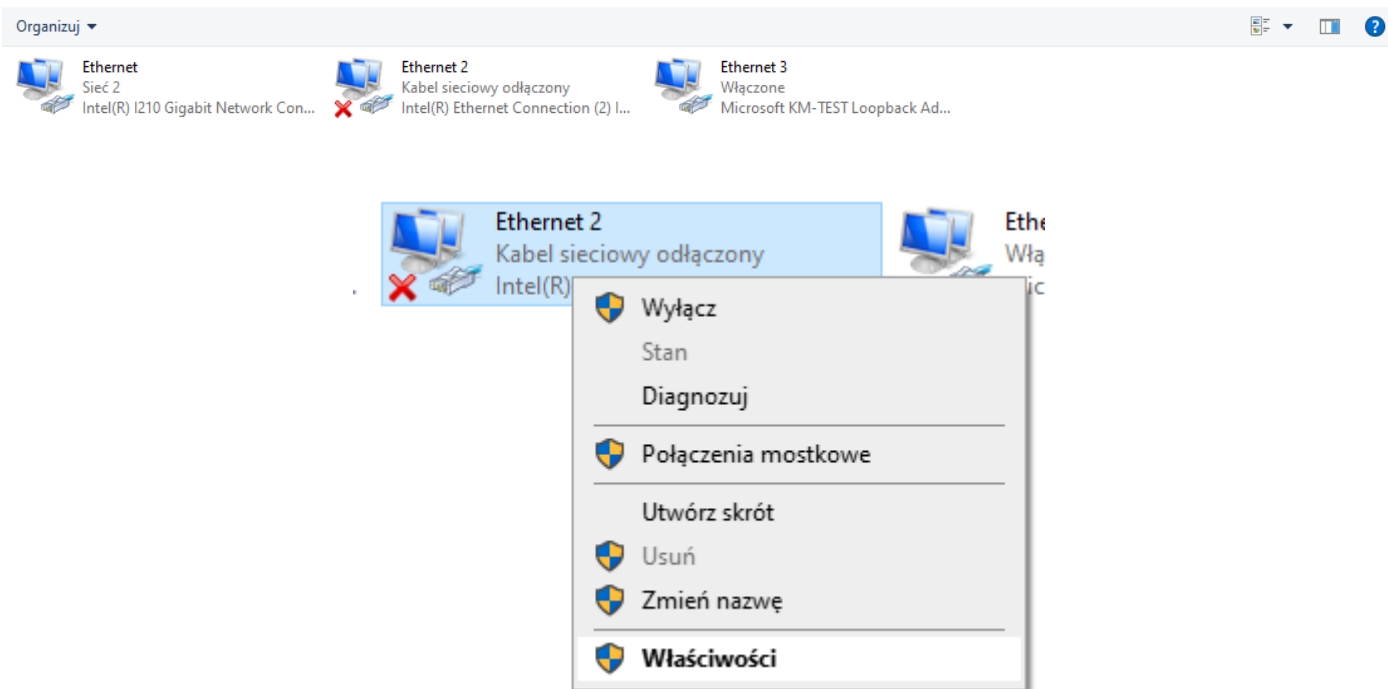


b) Find and choose „change network card options”

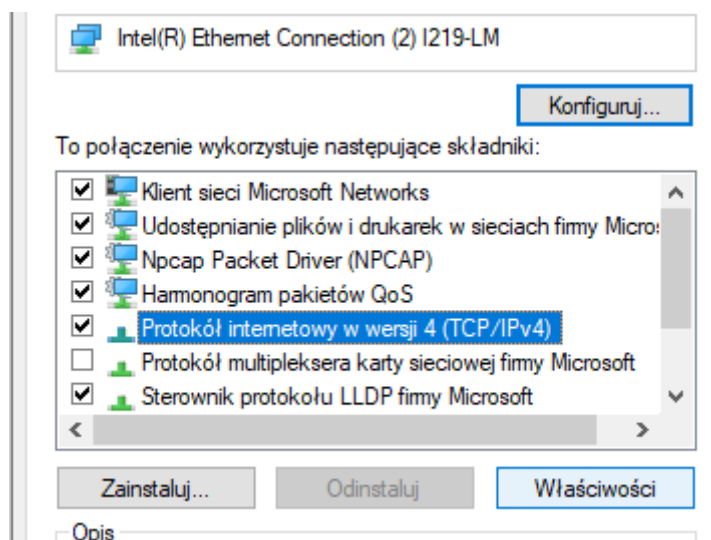
Zaawansowane ustawienia sieci

 **Zmień opcje karty**
Wyświetl karty sieciowe i zmień ustawienia połączeń.

c) Find and choose by right-clicking on network card using by You. Then select last one position position.



d) Find and select internet protocol **TCP/IPv4**. Then click „configure”.



- e) Change for manual select and enter the numbers below. At the end, instead of 20, there can be all numbers except 100 and 101! Choose ok for agree.

niezgodnie z ustawieniami protokołu IP. w przeciwnym wypadku musisz uzyskać ustawienia protokołu IP od administratora sieci.

Uzyskaj adres IP automatycznie

Użyj następującego adresu IP:

Adres IP:	10 . 0 . 0 . 20
Maska podsieci:	255 . 255 . 255 . 0
Brama domyślna:	. . .

Uzyskaj adres serwera DNS automatycznie

Użyj następujących adresów serwerów DNS:

Preferowany serwer DNS:	. . .
Alternatywny serwer DNS:	. . .

Sprawdź przy zakończeniu poprawność ustawień

Zaawansowane...

OK Anuluj

If You decide to back to only control roaster from device display TURN OFF PC control.